

# HOUSE & LAND PACKAGE



Westwood  
Mansfield Park

HOUSE & LAND  
**\$328,000\***

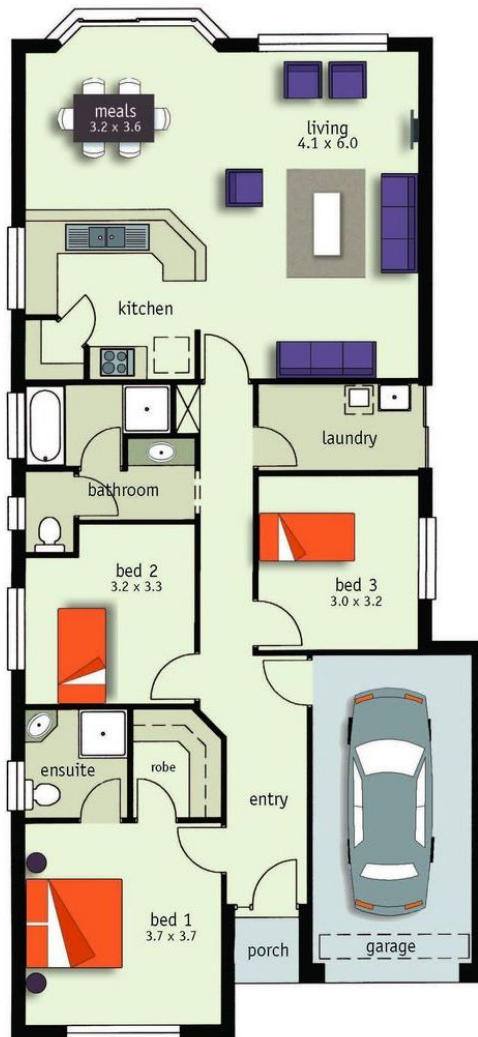
topaz

### Size Specifications

|        |                       |
|--------|-----------------------|
| Living | 124.88 m <sup>2</sup> |
| Porch  | 1.45 m <sup>2</sup>   |
| Garage | 20.52 m <sup>2</sup>  |
| Total  | 146.85 m <sup>2</sup> |
| Width  | 8.8 m                 |
| Depth  | 18.86 m               |

### Inclusions

- Single garage
- Concrete to garage
- Brick piers to garage
- Choice of elevations
- Portico under main roof
- Concrete to portico
- Reverse cycle air conditioning
- Flooring allowance
- Walk-in robe and shelf
- 1200mm high tiling (bathroom & ensuite) rows of tiles over kitchen
- Full width mirror over bathroom & ensuite
- Pivot shower cubicle doors
- Multi directional shower heads
- Built-in linen cupboard
- 1 3/4 bowl sink to kitchen
- Keylocks to sliding windows
- Exhaust fans
- Smoke detectors
- Earth leakage safety switch
- Plus much more



\* Conditions apply. (c) The Hickinbotham Group 2010. Subject to conditions and acceptance by company. Not valid with any other offer. Price may change without notice. Valid for 7 days from 30/11/0001. The Hickinbotham Group - Unauthorised use of these plans constitutes a breach of copyright which will make you personally liable for damages. The industry standard is 20% of the contract sum. westwood 1

For further details contact  
**John Booth on 0428 844 247**