

HOUSE & LAND PACKAGE



Lot 54
Kalimna Road
Nuriootpa

HOUSE & LAND
\$348,170*

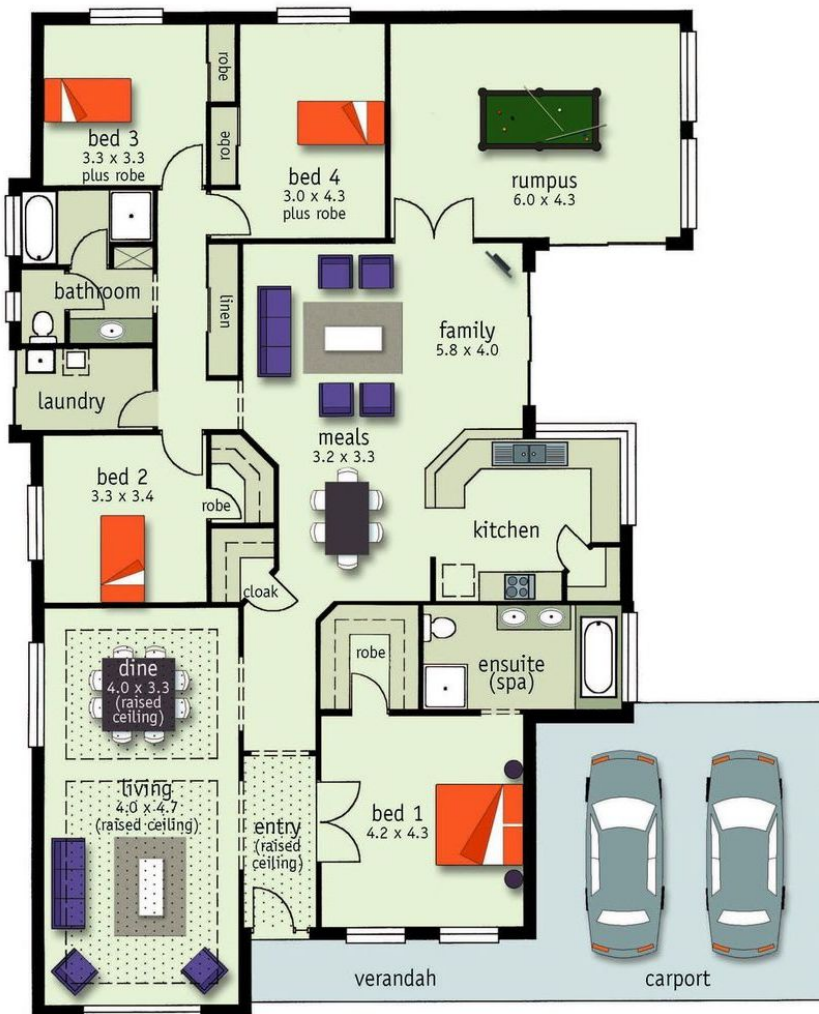
georgia spa

Size Specifications

Living	229.73 m2
Verandah	7.3 m2
Carport	36 m2
Total	273.03 m2
Width	16.77 m
Depth	20.26 m

Inclusions

- Double garage, 3 brick piers, 2 roller doors and concrete
- 2700mm ceilings
- Stainless steel appliances
- Overhead cupboards
- Walk-in pantry
- Ducted reverse cycle air conditioning
- Carpets to Bedrooms, Dining/Living areas
- Tiling to remainder
- Deluxe tiles to wet areas
- Walk-in robes
- Cloakroom
- Upgraded internal doors
- Smoke detectors
- Raised ceilings to Entry, Living/Dining
- Septic Tank
- **FIXED PRICED FOOTINGS**
- Plus much more
-
-
-



* Conditions apply. (c) The Hickinbotham Group 2010. Subject to conditions and acceptance by company. Not valid with any other offer. Price may change without notice. Valid for 7 days from 05/07/2010. The Hickinbotham Group - Unauthorised use of these plans constitutes a breach of copyright which will make you personally liable for damages. The industry standard is 20% of the contract sum. Lot 54 Kalimna Rd Nuriootpa

For further details contact
Peter Jackson on 0400 556 155