

HOUSE & LAND PACKAGE



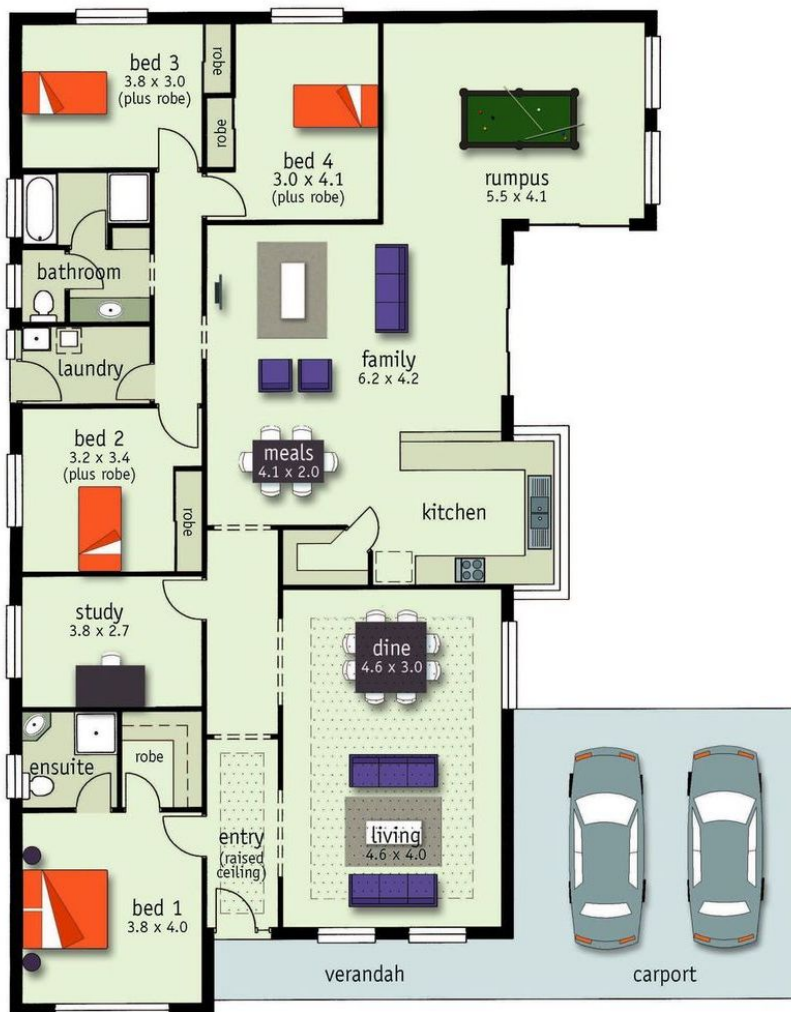
Lot 50
Kalimna Road
Nuriootpa

HOUSE & LAND
\$373,500*

rochester

Size Specifications

Living	227.06 m2
Verandah	7.86 m2
Carport	36 m2
Total	270.92 m2
Width	16.56 m
Depth	20.77 m



Inclusions

- Double Garage, 2 brick piers, panel lift door & concrete slab
- Carpet to bedrooms & living
- Wood laminate to the remainder
- Ducted reverse cycle air conditioning
- Stormwater disposal
- Heritage sandstone and rendered frontage as illustrated
- Instantaneous hot water system
- Westinghouse appliances
- Upgraded basins & tapware
- Broom cupboard, pull out laundry bin and floor cupboards to laundry
- *FIXED PRICE FOOTINGS INCLUDED*
- Full width mirror over bathroom & ensuite
- Termite barrier to perimeter
- Colonial architraves and skirtings
- Vinyl wrapped doors to all joinery with choice of designs
- 1 3/4 bowl sink to kitchen
- Keylocks to sliding windows
- Exhaust fans
- Smoke detectors
- Stanford doors plus more...

Hickinbotham
Jason Vandermeent
0418602701

* Conditions apply. (c) The Hickinbotham Group 2010. Subject to conditions and acceptance by company. Not valid with any other offer. Price may change without notice. Valid for 7 days from 27/04/2010. The Hickinbotham Group - Unauthorised use of these plans constitutes a breach of copyright which will make you personally liable for damages. The industry standard is 20% of the contract sum. Lot 50 Kalimna Road Nuriootpa

For further details contact
Jason Vandermeent on 0418 602 701