

# Hickinbotham



HOUSE & LAND

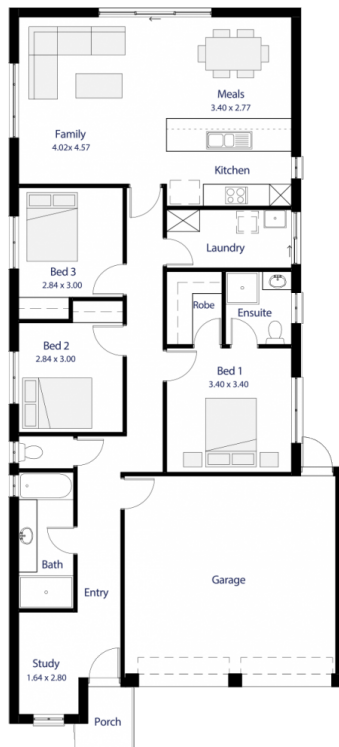
**\$282,046\***

## LOT 391

Burke Circuit,  
Penfield 'Eyre'

BLOCK SIZE: **300.00m<sup>2</sup>**  
HOUSE SIZE: **158.08m<sup>2</sup>**

BELLINGHAM



### PACKAGE INCLUSIONS:

- Double Garage, 3 brick piers, 2 Roller doors & concrete slab
- Upgrade to Panel lift door
- Carpet to bedrooms & Floating floor boards to remainder
- 2700mm High Ceilings
- Colourbond Roof (PROMO)
- Ducted reverse cycle air conditioning
- Insulation to Ceiling, External walls & internal walls
- Robes to the bedrooms included
- Overhead cupboards to the kitchen included
- Stormwater disposal
- Instantaneous hot water system
- Flat breakfast bar
- Walk-in robe and shelf
- 1200mm high tiling (bathroom & ensuite) & 3 rows of tiles over kitchen
- Full width mirror over bathroom & ensuite
- Pivot shower cubicle doors
- Multi directional shower heads
- Built-in linen cupboard
- 1 3/4 bowl sink to kitchen
- Keylocks to sliding windows
- Freedom Refined Series elevation

**ENQUIRIES: Pravin Andrade**  
**M: 0421 013 652 E: [pravina@hickinbotham.com.au](mailto:pravina@hickinbotham.com.au)**

[hickinbotham.com.au](http://hickinbotham.com.au)

\*Conditions apply. Certain elevations may not match the particular floor plan published in this package and, as such, all floor plans and elevations are for illustration purposes only. Land subject to availability. The land referred to in this promotion is not owned by us. We make no representation and, to the extent permissible at law, we disclaim all liability, as to the suitability of the land to build on, or the suitability of any house design, or otherwise. You must satisfy yourself of that by inspection, or by taking professional advice, or otherwise. Pricing is indicative only and based on standard costings. Price may vary depending on selections, engineering, council and utility requirements and adjustments to allowances. All packages subject to final council approval. Alan Hickinbotham Pty Ltd ABN 13 007 567 222, RLA 230557. Construction Services Australia Pty Ltd ABN 99 007 641 787, Building Licence G8969.