

Hickinbotham



HOUSE & LAND

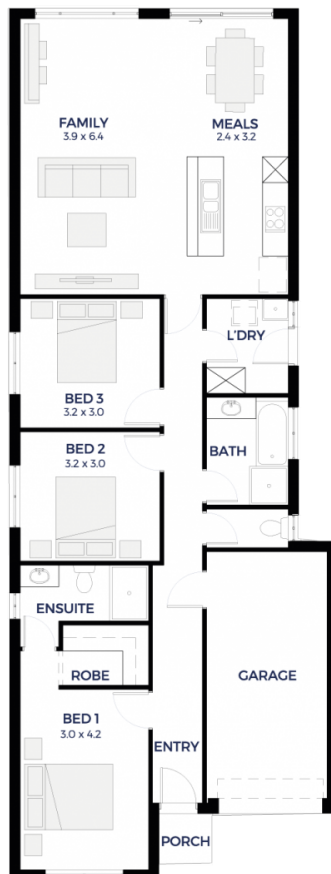
\$288,006*

LOT 77

Orchard Grove,
Salisbury North 'The Green'

BLOCK SIZE: **280.00m²**
HOUSE SIZE: **137.63m²**

TARRAGONA



PACKAGE INCLUSIONS:

- Single Garage, brick piers, roller door & concrete slab
- Carpet to bedrooms & living
- Timber to the remainder
- Ducted reverse cycle air conditioning
- Stormwater disposal
- Perimeter paving (1m) and driveway
- Instantaneous hot water system
- Walk-in pantry including shelves
- Walk-in robe and shelf
- Built in robes to bedrooms
- 1200mm high tiling (bathroom & ensuite) & 3 rows of tiles over kitchen
- Full width mirror over bathroom & ensuite
- R2.5 External wall insulation
- R5.0 Ceiling insulation
- Built-in linen cupboard
- Keylocks to sliding windows
- Choice of elevations
- Site works and footings allowance

ENQUIRIES: John Shigrov
M: 0415 199 550 E: johnshigrov@hickinbotham.com.au

hickinbotham.com.au

*Conditions apply. Certain elevations may not match the particular floor plan published in this package and, as such, all floor plans and elevations are for illustration purposes only. Land subject to availability. We make no representation and, to the extent permissible at law, we disclaim all liability, as to the suitability of the land to build on, or the suitability of any house design, or otherwise. You must satisfy yourself of that by inspection, or by taking professional advice, or otherwise. Pricing is indicative only and based on standard costings. Price may vary depending on selections, engineering, council and utility requirements and adjustments to allowances. All packages subject to final council approval. Alan Hickinbotham Pty Ltd ABN 13 007 567 222, RLA 230557. Construction Services Australia Pty Ltd ABN 99 007 641 787, Building Licence G8969.