

# Hickinbotham



HOUSE & LAND

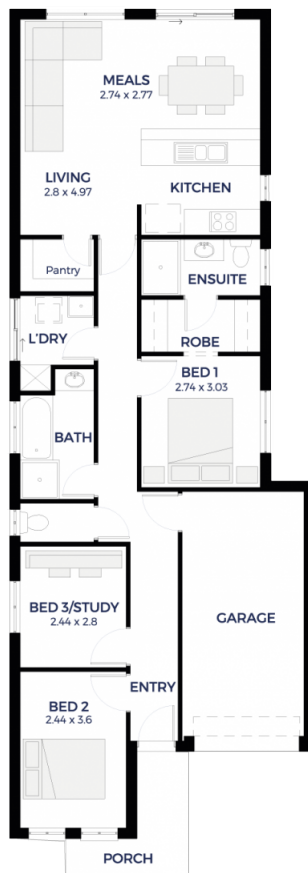
**\$255,588\***

## LOT 3

Header Avenue,  
Salisbury North 'The Green'

BLOCK SIZE: **243.00m<sup>2</sup>**  
HOUSE SIZE: **119.59m<sup>2</sup>**

FAIRFORD



### PACKAGE INCLUSIONS:

- TURN KEY PACKAGE
- LOW DEPOSIT FINANCE available, ask how!
- UP TO \$25,000 worth of grants!
- SUITABLE FOR HOMESTART
- Flooring Carpet to bedrooms, tiles to wet areas & Timber laminate to remainder
- Paving to perimeter (1m) and driveway & Stormwater disposal
- Single Garage, 2 brick piers, concrete slab & automatic garage door
- X2 350x350mm brick piers to porch
- Insulation to external walls, ceiling & garage
- Ducted reverse cycle heating & cooling air conditioning
- Overhead cupboards to kitchen inc over fridge provision
- Flat Breakfast Bar
- Under bench microwave provision with pot drawer
- Westinghouse retractable rangehood
- Stainless steel appliances
- Dishwasher provision
- NBN Provision & cabling to connect to NBN
- X2 TV points
- 1200mm high tiling (bathroom & ensuite) & 3 rows of tiles over kitchen
- Multi directional shower heads
- Keylocks to sliding windows
- Termite protection
- Instantaneous hot water system
- Siteworks & footings included
- More house & land packages available

ENQUIRIES: **Kimberly Albers**  
M: 0450 585 701 E: [kimberlya@hickinbotham.com.au](mailto:kimberlya@hickinbotham.com.au)

[hickinbotham.com.au](http://hickinbotham.com.au)

\*Conditions apply. Certain elevations may not match the particular floor plan published in this package and, as such, all floor plans and elevations are for illustration purposes only. Land subject to availability. We make no representation and, to the extent permissible at law, we disclaim all liability, as to the suitability of the land to build on, or the suitability of any house design, or otherwise. You must satisfy yourself of that by inspection, or by taking professional advice, or otherwise. Pricing is indicative only and based on standard costings. Price may vary depending on selections, engineering, council and utility requirements and adjustments to allowances. All packages subject to final council approval. Alan Hickinbotham Pty Ltd ABN 13 007 567 222, RLA 230557. Construction Services Australia Pty Ltd ABN 99 007 641 787, Building Licence G8969.