

# Hickinbotham



HOUSE & LAND

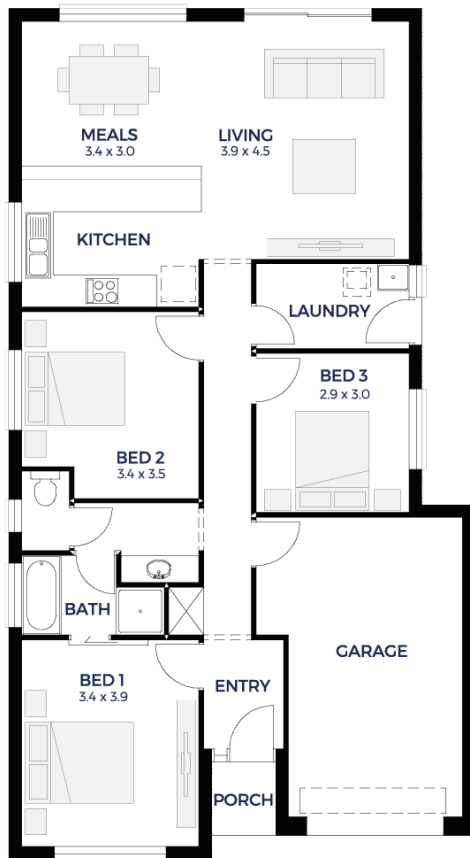
**\$284,355\***

## LOT 1022

Cobalt Drive ,  
Victor Harbor 'The Rise'

BLOCK SIZE: **375.00m<sup>2</sup>**  
HOUSE SIZE: **129.65m<sup>2</sup>**

ROSE



### PACKAGE INCLUSIONS:

- Double Garage, 3 brick piers, 2 roller doors & concrete slab
- Upgrade to panel lift door
- Automatic garage door mechanism
- Colorbond Roof
- Driveway & 1m perimeter paving
- 2700 ceilings throughout
- Overhead cupboards & retractable range hood to Kitchen
- Carpet to bedrooms
- Timber floating floors to the remainder
- Ducted reverse cycle air conditioning
- Dishwasher (Venini-no install)
- Dishwasher provision
- Stainless steel appliances
- Stormwater disposal
- Instantaneous hot water system
- Siteworks & Footings allowance

**ENQUIRIES: Chad Cooper**  
M: 0474 507 280 E: [chadc@hickinbotham.com.au](mailto:chadc@hickinbotham.com.au)

[hickinbotham.com.au](http://hickinbotham.com.au)

\*Conditions apply. Certain elevations may not match the particular floor plan published in this package and, as such, all floor plans and elevations are for illustration purposes only. Land subject to availability. We make no representation and, to the extent permissible at law, we disclaim all liability, as to the suitability of the land to build on, or the suitability of any house design, or otherwise. You must satisfy yourself of that by inspection, or by taking professional advice, or otherwise. Pricing is indicative only and based on standard costings. Price may vary depending on selections, engineering, council and utility requirements and adjustments to allowances. All packages subject to final council approval. Alan Hickinbotham Pty Ltd ABN 13 007 567 222, RLA 230557. Construction Services Australia Pty Ltd ABN 99 007 641 787, Building Licence G8969.