



Hickinbotham

South Australia's First Builder

Single storey investor designs

SA's best value homes



Wellesley

15.07 squares



Size Specifications

Living	118.85m ²
Porch	1.66m ²
Garage	19.84m ²
Total	140.35m ² / 15.07 sqs
Width	9.00m
Depth	17.50m

Compact yet stylish with all the luxuries like a large ensuite and island bench to the kitchen



Lisbon

16.01 squares

Size Specifications

Living	130.89m ²
Porch	0.66m ²
Garage	17.60m ²
Total	149.15m ² / 16.01 sqs
Width	6.50m (incl. single garage)
Depth	27.38m

Designed with a low maintenance lifestyle in mind, this home is perfect for narrow blocks – and no luxuries have been spared!





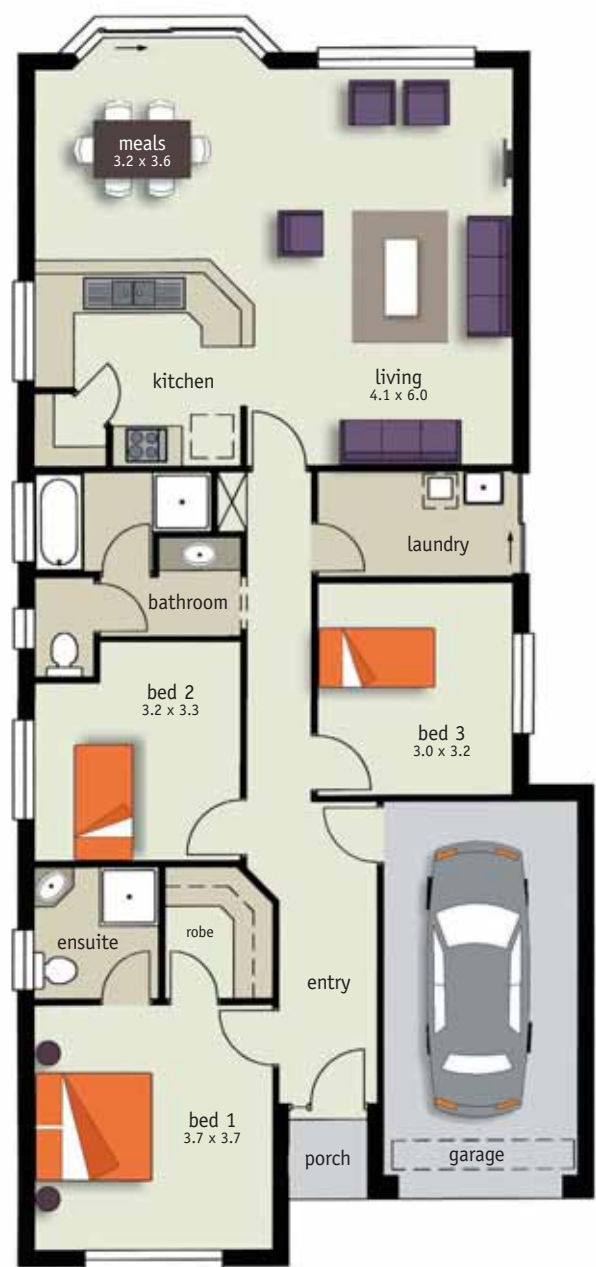
Topaz

15.77 squares

Size Specifications

Living	124.88m ²
Porch	1.45m ²
Garage	20.52m ²
Total	146.85m ² / 15.77 sqs
Width	8.80m (incl. single garage)
Depth	18.86m (incl. meals bay)

A unique home with a spacious kitchen and fabulous open-plan living areas





Acacia

21.07 squares



Size Specifications

Living	155.92m ²
Porch	3.02m ²
Carport	37.20m ²
Total	196.14m ² / 21.07 sqs
Width	11.80m (incl. double carport)
Depth	19.74m

Built with all the luxuries for modern living, this four bedroom home has it all!

Evian

21.64 squares



Size Specifications

Living	164.02m ²
Porch	1.50m ²
Garage	36.00m ²
Total	201.52m ² / 21.64 sqs
Width	11.50m (incl. double garage)
Depth	20.63m

Every space in this courtyard home is big – offering plenty of room to spread out

Greendale

21.92 squares



Size Specifications

Living	166.56m ²
Porch	1.50m ²
Garage	36.00m ²
Total	204.06m ² / 21.92 sqs
Width	11.50m (incl. double garage)
Depth	21.04m

An outstanding design with beautiful spaces as well as practical touches like the state-of-the-art kitchen with walk-in pantry or scullery



Aberdeen Alfresco

22.59 squares

Size Specifications

Living	159.67m ²
Porch	2.39m ²
Garage	36.00m ²
Alfresco	12.24m ²
Total	210.30m ² / 22.59 sqs
Width	11.50m (incl. double garage)
Depth	21.80m

Form follows function! Every area in this innovative home has been cleverly designed around the activity





Kingsborough

19.56 squares



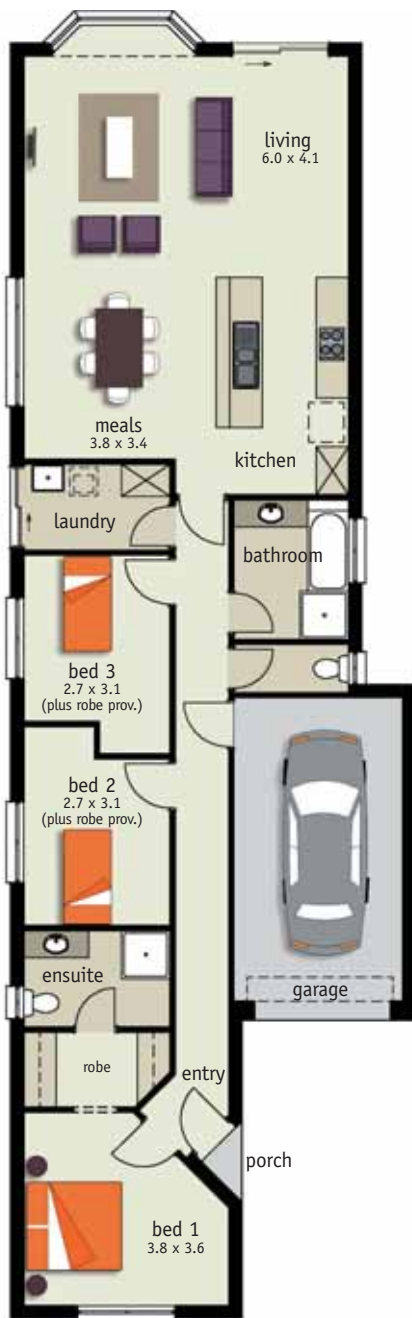
Size Specifications

Living	144.52m ²
Porch	1.50m ²
Garage	36.11m ²
Total	182.13m ² / 19.56 sqs
Width	11.50m (incl. double garage)
Depth	18.45m (incl. bay window)

Fantastic design makes this home a pleasure to live in, with designer bays that let the light stream in

Trafford

16.05 squares



Size Specifications

Living	128.42m ²
Porch	0.56m ²
Garage	20.46m ²
Total	149.44m ² / 16.05 sqs
Width	7.50m (incl. single garage)
Depth	24.25m (incl. bay window)

Designed for narrow blocks, this innovative design features a perfect blend of function and style with fabulous open-plan living and direct garage access



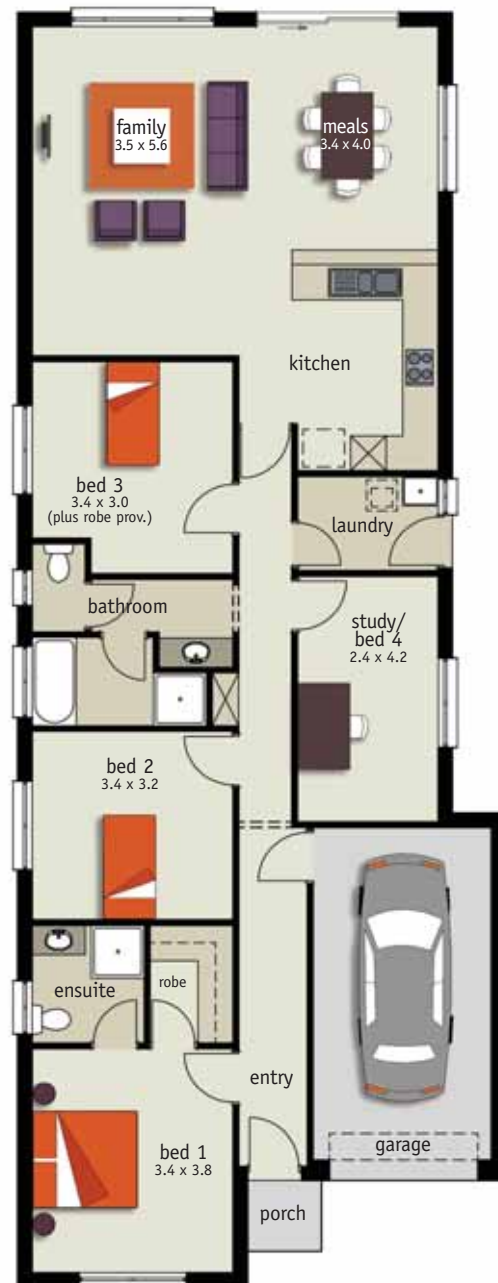
Montenegro

17.13 squares

Size Specifications

Living	138.26m ²
Porch	1.50m ²
Garage	19.74m ²
Total	159.50m ² / 17.13 sqs
Width	8.24m (incl. single garage)
Depth	21.61m

Stylish casual living areas and up to four bedrooms combine in this cleverly designed home





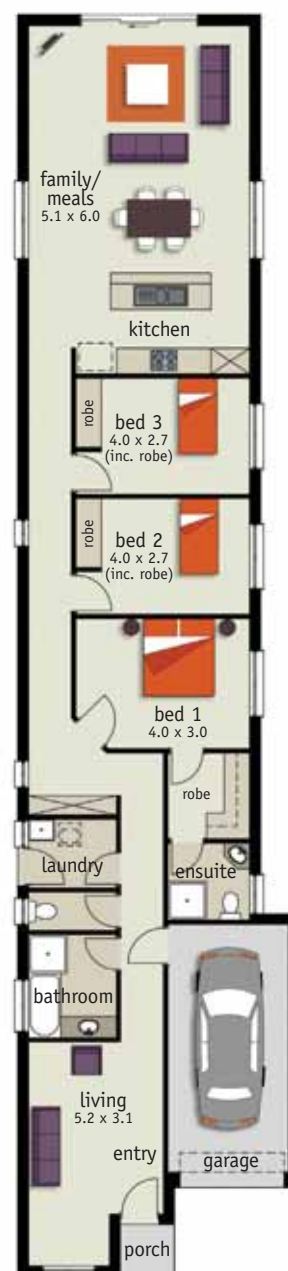
Basque

17.76 squares

Size Specifications

Living	145.13m ²
Porch	1.50m ²
Garage	18.79m ²
Total	165.42m ² / 17.76 sqs
Width	6.50m (incl. single garage)
Depth	29.25m

Only 6.5m wide, this expertly designed terrace home still features three bedrooms and all the inclusions for executive living



Vienna

17.86 squares



Size Specifications

Living	141.66m ²
Porch	1.44m ²
Garage	23.22m ²
Total	166.32m ² / 17.86 sqs
Width	9.00m (incl. single garage)
Depth	21.71m

An innovative home with a perfect blend of formal and casual living as well as function and style



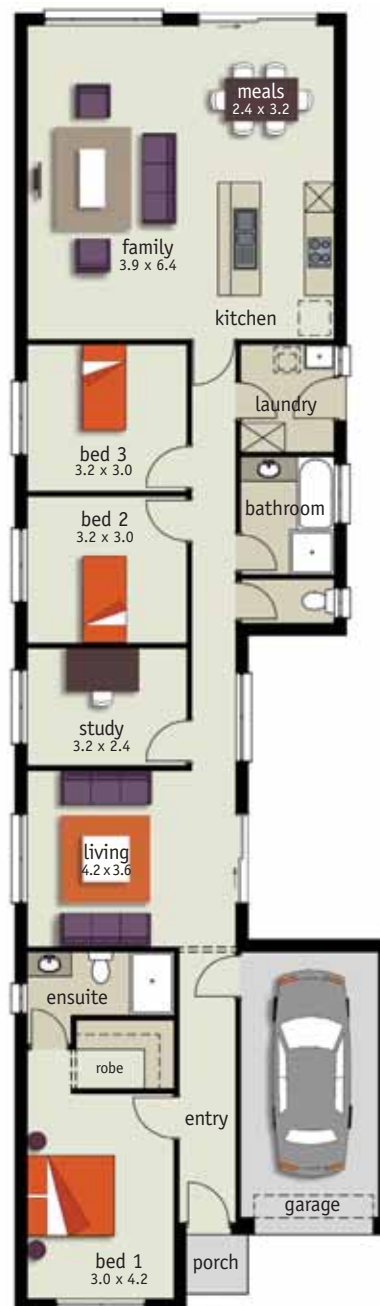
Camden

17.87 squares

Size Specifications

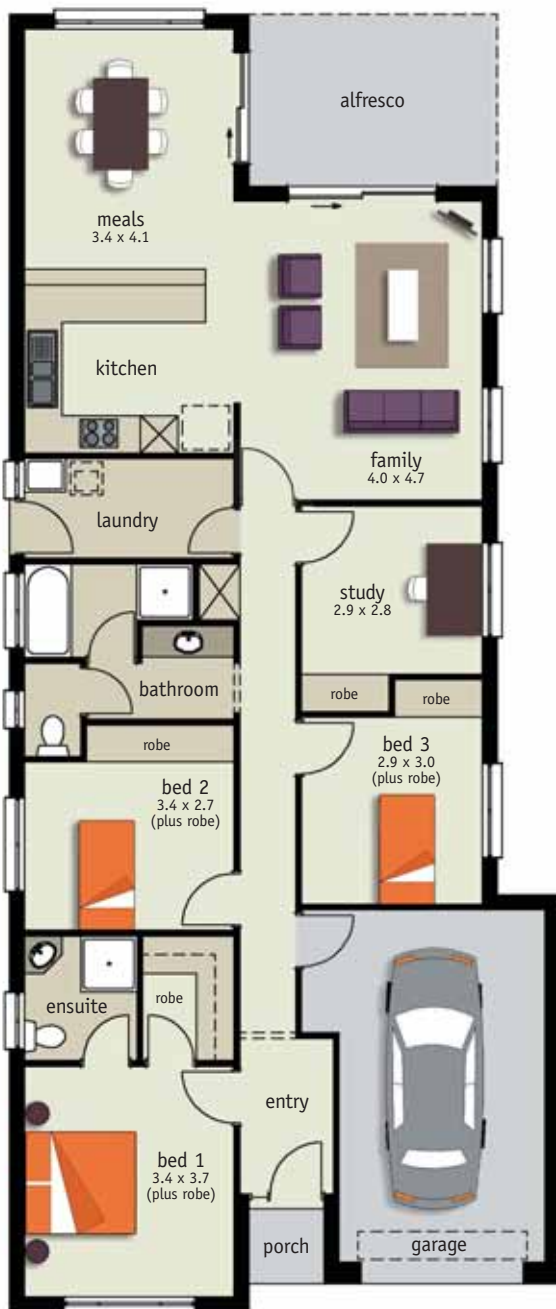
Living	146.92m ²
Porch	1.50m ²
Garage	18.00m ²
Total	166.42m ² / 17.87 sqs
Width	7.60m (incl. single garage)
Depth	26.40m

Ideal for narrow blocks, this deceptively spacious home has been innovatively designed to feature three bedrooms, a study and two living areas



Sienna Alfresco

17.92 squares



Size Specifications

Living	131.64m ²
Porch	1.45m ²
Garage	22.80m ²
Alfresco	10.96m ²
Total	166.85m ² / 17.92 sqs
Width	8.80m (incl. single garage)
Depth	20.82m

Designed with our Mediterranean climate in mind, the living areas are designed to flow out onto a stunning alfresco patio



Armstrong

18.09 squares

Size Specifications

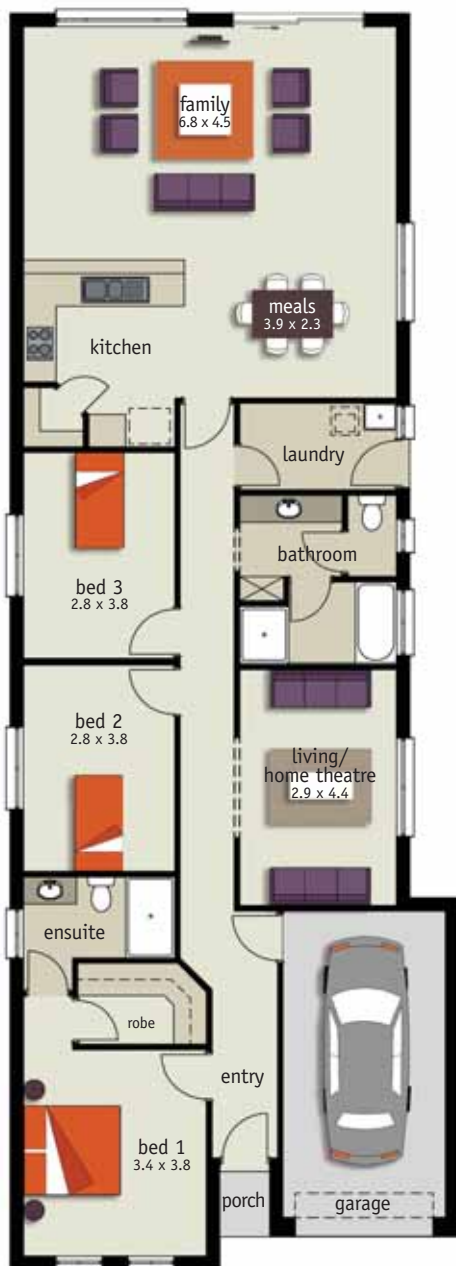
Living	125.20m ²
Verandah	5.66m ²
Carport	37.58m ²
Total	168.44m ² / 18.09 sqs
Width	8.00m
Depth	26.50m (incl. carport)

Perfect for narrow blocks, the double sliding doors to the family/meals area provide a great opportunity for seamless indoor/outdoor living



Matisse

18.46 squares



Size Specifications

Living	150.98m ²
Porch	1.09m ²
Garage	19.79m ²
Total	171.86m ² / 18.46 sqs
Width	8.20m (incl. single garage)
Depth	23.06m

With a home theatre area, spacious family room and two bathrooms, the Matisse is perfect for entertaining family and friends

Gladstone

17.04 squares



Size Specifications

Living	135.28m ²
Porch	2.17m ²
Garage	21.25m ²
Total	158.70m ² / 17.04 sqs
Width	10.00m (inc. single garage)
Depth	17.33m

An outstanding design with clever use of space makes this home ideal for investors, young families and retirees on a budget

Canterbury

18.52 squares



Size Specifications

Living	133.80m ²
Porch	2.66m ²
Garage	36.00m ²
Total	172.46m ² / 18.52 sqs
Width	11.50m (incl. double garage)
Depth	17.65m

A designer island bench in the centre of the kitchen ensures a great view of the light filled living areas

Milano Alfresco

22.24 squares



Size Specifications

Living	161.04m ²
Porch	2.40m ²
Carport	36.00m ²
Alfresco	7.62m ²
Total	207.06m ² / 22.24 sqs
Width	15.39m (incl. double carport)
Depth	17.22m

A stunning alfresco area makes entertaining in this family home a breeze

Austin

16.85 squares



Size Specifications

Living	132.10m ²
Verandah	7.24m ²
Carport	17.62m ²
Total	156.96m ² / 16.85 sqs
Width	16.16m (incl. single carport)
Depth	10.00m

Airy open plan living and good-sized bedrooms make this a practical family home ideal for today's lifestyle

Jefferson Alfresco

19.64 squares



Size Specifications

Living	120.34m ²
Porch	1.44m ²
Alfresco	15.60m ²
Garage/ Workshop	45.49m ²
Total	182.87m ² / 19.64 sqs
Width	10.00m (incl. double garage)
Depth	20.50m

With the main bedroom leading directly onto the outdoor alfresco area, this home is ideal for leisurely Sunday mornings. The light-filled living area is great for entertaining and the workshop in the garage is great for extra storage